



THE VILLAGE PUMP



March - April 2026

No. 182



A newsletter for Atcham, Berrington, Betton, Brompton, Cantlop, Cross Houses and Eaton Mascott



Berrington Parish Council

Atcham Parish Council

Website: www.berringtonparishcouncil.org.uk

Clerk: Lorna Pardoe

Email: berringtonpc@gmail.com

Members: Henry Carpenter (Chair)
Hamish Eccles (Vice-Chair)
Amy Yeomans
Sharlene Hess
Marcia Rathbone
Nicholas Biggs
Andrew Abbott
Charlotte Morris
* Vacancy *

Meeting Dates: 7pm on 1st Thursday of the month
Thursday 2nd April 2026
Thursday 7th May 2026

Venue: Chapel Community Centre, Cross Houses

Facebook: www.facebook.com/BerringtonParishCouncil

Website: www.atchamparishcouncil.gov.uk

Clerk: Alison Utting

Email: clerk@atchamparishcouncil.gov.uk

Members: Laura Dixon (Chair)
Stephen Cook
Catch Ritchie
Gareth Jones
Martin Ruston
Rob Trow
* Vacancy*

Meeting Dates: Usually 7:30pm on 2nd Wednesday every other month
Wednesday 13th May 2026

Venue: The Old Malthouse, Atcham

Facebook: www.facebook.com/atchampc

Please note whilst the above dates were correct at the time of publication, they are subject to change, with details provided on the Berrington or Atcham Parish Council websites and the agenda prior to each meeting.

The Village Pump

The Village Pump is published every two months and distributed to 700 households in the parishes of Atcham and Berrington. Our printing costs are met by income from advertising. Distribution is carried out by a team of volunteers. If you feel you could help your community by delivering the Pump in your area please contact the editor. The more volunteer deliverers we have the smaller the area to deliver.

Advertising rates are:

Full Page: £25 per edition or £110 per annum
1/2 Page (Landscape): £12.50 per edition or £55 per annum
1/4 Page (Portrait): £10 per edition or £45 per annum
1/4 Page (Landscape): £10 per edition or £45 per annum
1/8 Page (Landscape): £7.50 per edition or £30 per annum

**Deadline for submissions
for May edition:
24th April 2026**

If you represent a not-for-profit organisation or are organising a local event, we do not charge for advertisements in these cases.

Advertisements need to be paid for in advance. If you would like to place an advert in the Village Pump then please contact the Editor: thevillagepump@outlook.com. We look forward to hearing from you.

ADVERTISEMENT DISCLAIMER

Please note ACCEPTANCE OF ADVERTISEMENTS DOES NOT IMPLY ENDORSEMENT. THE EDITOR RESERVES THE RIGHT TO EDIT ARTICLES IF SPACE IS LIMITED.

Do you have an idea for an article, would like an event or something of interest to be shared in the magazine? Then please contact the Editor, Andrew Abbott, at thevillagepump@outlook.com.

Cover photo: © Hamish Mackenzie



IN THIS ISSUE...

Atcham Parish Council update	Page 4
Atcham resurfacing	Page 5
News from St. Eata's at Atcham	Page 6
Attingham Outdoor Hub	Page 7
Photo Competition	Page 9
Berrington Parish Council update	Page 10
Cressage Primary School	Page 11
Cross Houses book club	Page 14
Councillor Susan Coleman	Page 18
Cross Houses Community Centre	Page 19
Medical Practice updates	Page 21
Shropshire Ornithological Society	Page 23
Attingham Updates	Page 25
Useful Telephone Numbers	Page 28

We're keen to hear ideas for interesting local articles to go in future editions of The Village Pump, so if you have any thoughts or feedback, please send an email to thevillagepump@outlook.com.

The community magazine is an important asset to the local villages and we want to not only keep it going but for it to thrive. The aim is to include a mixture of interesting articles, parish updates, service offerings and useful advertisements from local tradespeople and businesses.

We received several entries for this month's photo competition and have featured an image from Hamish MacKenzie as the cover photo, thank you for sending them in. We'd like to keep this going, and with the days getting longer and the weather improving, please do send in your Spring photos for the next issue!

Finally, we are still looking for people to help with the delivery of a few issues of The Village Pump any help is greatly appreciated.

Andrew Abbott



Hardwood Logs

Free local delivery

Un-Seasoned, Barn Stored & Kiln Dried

Visit our website for our full range of logs, kindling, log stores & more

01746 785606

www.logs2yourdoor.co.uk

NATIONAL TRUST OUTDOOR HUB

The January parish council meeting was held prior to the approval of the plans by the Southern Planning Committee. A new document submitted by Hereford Storage reaffirmed that they would not allow access over their land, suggesting the proposal lacked a viable route to the public highway and would require major redesign if it were to proceed.

VILLAGE GATES / BOLLARDS

The village gates are scheduled for installation soon. Repairs to the main bridge parapet on the B4380 are now complete, with repairs to Chilton Bridge happening shortly. We are sorry that both the resurfacing in the village and the white line painting at Emstrey have had to be postponed. We will post any confirmed updates on our website and Facebook page.

ROAD SAFETY

Road safety measures at Emstrey Bank remained unresolved. Speed-monitoring data collected via ATC strips was reviewed by councillors and was published on the council website.

The data from the speed monitoring strips does not support any additional signs, but we are aware that we now have both existing hazard warning signs not working. We are in communication with Highways to see whether they can be replaced with SIDs – the type of signs which display vehicle speed with a 'SLOW DOWN' or 'Smiley/frowny face' message and also record speed data.

COUNCILLOR CO-OPTION

There had been two applications to fill the vacancy on the council. It was resolved that Cathy Ritchie be co-opted. Thanks were recorded to the other applicant.

VACANCY

Councillor Simon Adney has stepped down, after several years of service. He leaves with thanks from the council for his commitment to this role and his contribution to community life as a councillor. There is now a vacancy which can be filled by co-option. If you are interested in joining us, please contact the Clerk at least one week before the next meeting.

LITTER PICK

We hope to arrange this soon, possibly during road closures. Keep an eye on our website and Facebook page to find out how you can join in.

GROUNDSKEEPING

We are very pleased to confirm that we have renewed our groundskeeping contract for the next 3 years with our current provider. We hope you agree that he does a fantastic job of keeping the village and surrounding areas looking wonderful.

ANNUAL COMMUNITY MEETING

This will be held on Wednesday 13 May at 7pm in the Memorial Hall. The Community Meeting is an opportunity for all residents to come forward with problems, questions and ideas. We hope to have representatives of Brunning & Price, the National Trust, and the Memorial Hall to share updates and take questions. If you have any other matter that you would like discussed, please let us know or just come along.

Do you have any comments? Or a new idea that might benefit the community? Please come along to one of our meetings or contact the Clerk. Don't forget to let us know if you have any community news that you would like us to share online. Photos of the village and surrounding countryside are also welcome, so if you snap a good view do send it to us.

Website: atchamparishcouncil.gov.uk

Facebook: [Atcham Parish Council](https://www.facebook.com/AtchamParishCouncil)

Parish Councillors: Laura Dixon (Chair), Simon Adney, Stephen Cook, Gareth Jones, Martin Ruston, Rob Trow, Cathy Ritchie.

Clerk: Alison Utting 01691 622093 clerk@atchamparishcouncil.gov.uk



Church Services and News from St. Eata's at Atcham

There is a Eucharist (BCP) every Sunday at 11am. Everyone is most welcome at this Service. Tea, coffee and cake is served on alternate Sundays.

Sunday 15th March - Service at 11am

Sunday 22nd March - Service at 11am

Sunday 29th March – Service at 11am – Palm Sunday

ADVANCE NOTICE OF EASTER SERVICES

Maundy Thursday 2nd April

Good Friday 3rd April -Service at 11am

Easter Sunday 5th April – Service at 11am

ADVANCE NOTICE

Sunday 17th May 2026 – Longner Hall –
Homemade teas and refreshments in aid of St
Eata's Church provided 2pm to 5pm as part of
the National Garden Scheme open day.

Sunday 5th July 2026 – Church Fete and Duck
Race at 2pm.

COFFEE MORNINGS in Church on the 1st
Friday of each month from 10:30 onwards

MANY THANKS to those who have volunteered
to help tidy up in the Church and Churchyard
e.g. clearing ivy from the headstones, polishing
brasses in Church. If you are also willing to help
please contact Sue on 01743 761155. A
Working Party will be organised on an agreed
date when refreshments will be provided.



ATCHAM VILLAGE HALL



(Atcham War Memorial Hall)

Available for hire for classes,
meetings, parties and events

Contact the Booking Clerk:

atcham.villagehall@btinternet.com

Or telephone 07485 029331

✠ Berrington with Betton Strange ✠ Church Preen ✠ Cressage ✠ Cound ✠ Easthope ✠

THE WENLOCK TEAM OF PARISHES

✠ Harley ✠ Hughley ✠ Kenley ✠ Sheinton ✠ Shipton ✠ Stanton Long ✠ Much Wenlock with Bourton X

For details of services, more information and contact details regarding the Wenlock Team of
Parishes please visit www.wenlockchurches.co.uk or call 01952 727396

ATTINGHAM OUTDOOR HUB

Plans for the Attingham Estate's new Outdoor Hub, located on land adjacent to Atcham Business Park, were approved at the Shropshire Council's Southern planning Committee meeting on 29th January.

The development will see the diversification of the Estate's wider land, with the construction of a "new distinct experience" separate from the current facilities available to visitors.

Taking place over 27.5 hectares, the development will include:

- New buildings including a kitchen, café, courtyard, community room, bike rental
- Associated parking
- Active play equipment for children of all ages
- Walking and cycling trails with connections to existing bridleways for horse riders
- Planting and habitat enhancement and creation

The National Trust says the project responds to a recognised shortage of accessible green spaces in Shropshire, with existing attractions such as the Wrekin and Haughmond Hill becoming increasingly busy.

Attingham Park sits within a 4,000-acre estate, but currently only a few hundred acres are open to visitors.

The Estate has claimed that it needs to open more of its land to adapt to population growth and provide more room for recreation.

The initial construction phase will create five miles of accessible footpaths, a car park and toilets, with longer-term plans for community rooms, a reception area, and a café.



ATTINGHAM OUTDOOR HUB

Atcham Parish Council submitted a statement to be read out during the Shropshire Southern Planning Committee meeting, objecting on the following grounds:

- Significant concerns over increased traffic, congestion, and highway safety impacts on residents and visitors.
- The Parish Council notes unsafe pedestrian and cycling access, with proposed sustainable transport improvements considered theoretical and not reflected in the plans.
- Norton Crossroads, the main access point, is already an accident hotspot, and the funding allocated for improvements is deemed inadequate.
- Residents fear insufficient event management, 24/7 access, and a lack of prior consultation from the National Trust.

In its Spring Community Newsletter, the National Trust said that:

“The outdoor hub will open up more green space for everyone to enjoy, with new trails, improved facilities and more ways to explore the Attingham Estate throughout the year. As well as enhancing the visitor experience, the project will bring meaningful benefits to the local economy, creating jobs in areas such as outdoors and facilities teams, food and beverage, bike hire and visitor welcome.

“There will also be opportunities for local contractors and suppliers as the project progresses. Alongside this, we’ll be introducing new volunteer roles to support everything from trail maintenance and nature conservation to welcoming visitors, helping with outdoor activities and assisting our food, beverage and retail teams. These roles will offer people a chance to learn new skills, support their local heritage and play an active part in caring for this much-loved place.”

Atcham & Cross Houses Mobile Library



CROSS HOUSES

Lower Cross, 10:10 – 10:40
Friday 13th February & 27th February
Friday 13th March & 27th March

ATCHAM

By The Glebe, 13:20 – 13:35
Friday 13th February & 27th February
Friday 13th March & 27th March

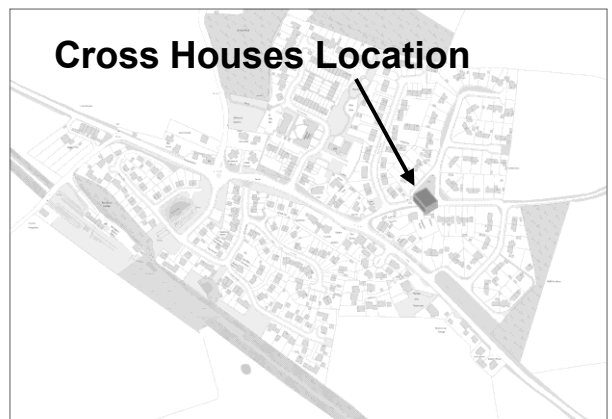
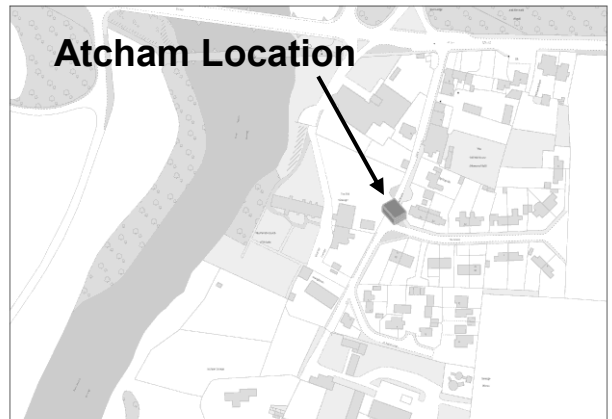


Photo Competition

Would you like to see your photo featured on the cover of The Village Pump?

Then enter the February – March photo competition!

Simply take a photo at any time during the month of February or March and submit it to thevillagepump@outlook.com before Tuesday 31st March 2026.

Voting to decide a winner will take place via social media, with the winning photo being featured in the next edition of The Village Pump.

Eligibility: Photo must be taken in the parishes of Atcham or Berrington. All photos must be the original work of the entrant. Entries must not infringe upon the trademark, copyright, moral rights, intellectual rights, or rights of privacy of any entity or person. The editors decision is final.



Interested in growing your own vegetables and fruit?



Your nearest allotment site is on the Chestnuts estate in Cross Houses and we will have some plots available for 2026.

Call Cameron on 01743 761443 for details.



Cound & District Crafters

Meetings are held on the first Monday of each month at Cound Guildhall 10am - 12 noon. £5 per session, different crafts each meeting.

Everyone is most welcome - new ideas can be incorporated and tried so please come along and join us.

Please contact Sue on 01743 761355 or email sushedden52@gmail.com for more information.

BERRINGTON PARISH COUNCIL

FLETCHER HOMES DEVELOPMENT

During the January parish council meeting a representative from the planning agent (Berrys) for the new Berrington Meadows development for 55 dwellings to the east of Ridout Road attended the meeting and summarised updates to site plans and revisions made in response to resident and Council feedback. Changes included the introduction of single-storey bungalows at the site entrance, increased parking provision for larger dwellings, relocation of the play area to the eastern side of the site and correction of the redline boundary to reflect proper land ownership.

Noise concerns relating to the proposed pumping station were discussed. Access considerations remained a concern.

Councillors challenged the developer's Transport Statement, stressing ongoing concerns with the nearby roundabout, including its design flaws, incomplete adoption by Shropshire Council, and long-standing safety complaints.

Although acknowledging improvements, the Parish Council formally objected to the revised proposal, citing unresolved issues relating to residential amenity, access, infrastructure, and highway safety. The Council requested further investigation into a Church Lane access route, preferably a new roundabout, amendments to building heights adjacent to existing properties, and completion of existing roundabout improvements before additional development proceeds.

DAMAGED BERRINGTON WELL

The longstanding issue of the damaged well and footpath in Berrington village is now approaching a resolution. The Parish Council agreed in principle to contribute a grant toward necessary structural repairs.

OTHER PARISH MATTERS

The parish council discussed updates on the village defibrillator replacement, ongoing VAS signage progress, speed concerns in Cantlop Cross, and planned engagement with police representatives regarding local speeding.

COMMUNITY LITTER PICK

The parish council will organise a community litter pick for the morning of Sunday 29th April, meeting at the Cross Houses Community Centre at 09:00. Litter pickers will be provided.

CROSS HOUSES COMMUNITY CENTRE

The parish council is continuing to look for volunteers to help with the running of the Chapel Community Centre. The more who get involved, the lighter the load will be.

Whether you can help with providing access / locking the building up, checking the tidiness between bookings or fixing a leaking tap, any and all support is appreciated.

Please contact the parish council at berringtonpc@gmail.com for further information.

The next parish council meeting will be held on Thursday 2nd April 2026.



**James Wright
Handyman and
Painting**



Small jobs welcome
Fully insured
Contactless payments

Find me on Facebook via Cross Houses Community group

07562 864 436
jrwright@hotmail.co.uk

CHRIST CHURCH C.E. PRIMARY SCHOOL, CRESSAGE

Our School Choir Perform at Young Voices in Birmingham!

Young Voices host the largest children's choir concerts in the world, bringing together primary schools from across the UK in a truly electrifying experience.

Through these unforgettable events, children discover their voices, grow in confidence and feel part of something extraordinary – all while inspiring a lifelong love of music.

Our school choir, inspired and expertly guided by Mr Brotherton, have been working tirelessly since September, pouring energy and enthusiasm into a vibrant medley of songs as they prepared for their performance at Young Voices 2026 in Birmingham this January.

Alongside 6,000 children from primary schools across the country, our pupils took part in an exciting warm up, perfecting spectacular Mexican waves that rippled around the BP Pulse Arena. They then threw themselves wholeheartedly into almost two hours of joyful singing, filling the arena with energy as friends and family cheered them on from the audience.

Taking part in events such as this creates lifelong memories and plays a vital role in building confidence, resilience and self esteem. Our school places great value on developing the whole child, and we are certain that this incredible experience will stay with our children for years to come.

Emma Clarke, Acting Head of School



Our choir enjoying the atmosphere before the performance

We have spaces in our Nursery for children who are 3 or over in September.

We have a wonderful setting and accept 15 or 30 hour vouchers. As a school we are 'not for profit' which means we don't have lots of extra charges and you can use your hours flexibly. Please come and have a look at our nursery, Little Acorns and meet our staff and chat to us informally.

Would you like to visit us and see our friendly, village school?

You can ring the office: **01952 510383** and make an appointment to come and see school during the school day or afterwards. We love showing prospective parents around as we are very proud of our school.



Follow us on Facebook for regular news and updates: [@ChristChurchSY5](https://www.facebook.com/ChristChurchSY5)

Our website is also full of updates and information:

christchurchcressage.co.uk

You can email us on admin@christchurch.shropshire.sch.uk

CHRIST CHURCH C.E. PRIMARY SCHOOL, CRESSAGE

The start of the summer term sees new class topics, which are chosen to link with our school vision of: Preparing, Sowing and Growing. We are **preparing** children for life in modern Britain today to be active and compassionate citizens. We are **sowing** seeds of kindness, love, care and intellectual curiosity to ignite a life-long love of learning. We are **growing** an understanding of the Christian faith and the link between belief and behaviour. We want to see our Christian values take root and grow in our community life, so all are treated with dignity and respect.

This term our Nursery children in Little Acorns Class, are learning about 'What Places do we Visit?' and they are loving learning about the differences between villages such as Cressage and those next to the seaside. Acorns Class, who are Reception and Year 1, are asking 'What is life like in Shanghai?' looking at the differences between our local area and Shanghai. Maple Class, who are Years 1 and 2, are starting their topic of 'Shipwrecked' looking at Grace Darling. Holly Class, who are Years 3 and 4 are exploring 'Why did Britain have to go to war in 1939?' developing their historical enquiry skills. Willow Class, Years 4 and 5, are starting a new topic this year about 'How diverse are North and South America's places and landscapes?' comparing two very different continents. Our oldest children in Oak Class, who are Year 6, will be looking at 'Why does Population Change?' exploring the reasons for population variation and change around the world.



Last term all classes experienced a lesson about different aspects of Space in the Wonderdome!

All of our children's learning is enhanced by exciting trips and visitors to school. This year Acorns Class have visited the Shropshire Hills Discovery Centre to take part in minibeast workshop. Maple Class have experienced a 'Night Under the Stars' where they made their own pizzas and listened to a storyteller under the stars. Holly Class were immersed in an Ancient Egyptian workshop led by Shrewsbury Museum and Art Gallery. Willow Class made some fantastic Roman clay pots at Shrewsbury Museum and Art Gallery and Oak Class explored the wealth of Greek architecture on a walk around Shrewsbury. All of these rich opportunities help develop our children's love of learning.

BERRINGTON LITTER PICK

Anyone wishing to get involved in making the community a cleaner, tidier and more pleasant place to live should meet at The Community Centre, Cross Houses on **Sunday 29 March 2026 at 09:00** for a **community litter pick**.

Please bring your own hi-viz clothing and litter pickers where possible, however a limited number of litter pickers can also be supplied. Bin bags will be provided.



Open to all ages, with an opportunity for children to get involved away from the busier roads.

For all your roofing needs,
get in touch today

- ★ Slipped or broken tiles
- ★ Full re-roofing
- ★ Gutter repairs
- ★ Lead work



Phone number : 07888 258 872

Email: laroofing2024@gmail.com



Hardwood LOGS

TWO LOAD SIZES AVAILABLE
NO DELIVERY CHARGE

Lengths cut to suit your needs
m: 07860 419025
t: 01694 731 621 (after 7pm)



COLUMN FLOWER CLUB

CHAPEL COMMUNITY CENTRE, THE
CHESTNUTS, CROSS HOUSES, SY5 6JH

Monthly Tuesday Meeting: 7.00pm (for 7.15pm start)

Pop along one evening to see us, everyone is made very
welcome. Visitors fee £5

14th April 2026

‘Ikebana Unbound’

A demonstration by Jan Roberts

12th May 2026

‘Practical Evening

9th June 2026

‘The World of Flowers in Art’

Talk & Floral Accompaniments by Debbie Murphy

14th July 2026

Club Summer Social Evening

**For more information/contact details visit our
website**

<https://www.columnflowerclubshrewsbury.co.uk>

OUND AND DISTRICT TENNIS CLUB



**Come and join in our fun and social tennis
community**

<https://clubspark.lta.org.uk/coundanddistricttennisclub>

or use our Cound and District Tennis Club Homepage QR Code



For membership enquiries please contact us at membershipcound@btinternet.com

**Adult beginners courses, adults drills & cardio, Juniors Saturday
coaching and private lessons**

Please contact Club Coach Graham Hart on 07960 970 017 or email
hartg734@aol.com

Or find us on Facebook!



CROSS HOUSES BOOK CLUB

Do you enjoy reading and would like to discuss your ideas and thoughts with like minded people - then please come and join our small, free, friendly and local book club.

For more information, please call Sue on **01743 761355** or email sueshedden52@gmail.com.

Reading List 2026

16th April – 'This Is Going to Hurt' by Adam Kay

21st May – The Book of Beginnings by Sally Page

18th June – The Deadly Detective Agency by Ann Parker

16th July – Salmon Fishing in The Yemen by Paul Torday

August – Lessons In Chemistry by Bonnie Garmus OR Death in the Crypt by Fliss Chester

17th September – The Countdown Killer by Sam Holland

15th October – Come Sundown by Nora Roberts

19th November – When Breathe Becomes Air by Paul Kalanithi

17th December – A Christmas Railway Mystery by Edward Marston

FOR THE LOVE OF ANIMALS



**Dog walking and
pet services**

Tel: 07805 727 697

References available upon request



ADVERTISE IN THE PUMP

Want to see your business featured in The Village Pump? Get in touch – thevillagepump@outlook.com. Rates can be found on the inside cover on Page 2.

The Village Pump is widely read by people throughout the parishes of Atcham and Berrington and beyond – and unlike a social media advert which is passed in the flash of an idle scroll, not to mention your advertising money not staying local, people value The Pump and return to it time and time again... and your money is reinvested into the local community.



We are a small group of very friendly ladies who meet on the third Monday of the month, 10am - 12 noon at the Community Room, Noel Hill Road for a chat and to make items for charity events which we run twice a year for local causes - everyone is welcome and you don't have to worry about ability - we are all different and learn from each other whilst having a laugh.

**We welcome new members, please
come along and join us.**

For more information please contact Sue on 01743 761355 / 07773 161635 or email sueshedden52@gmail.com

Severn Hospice care is supporting you at home

A gift in your will makes this possible

For more information get in touch with Sophie Higgins, Individual Giving Manager
01952 221351
individualgiving@severnhospice.org.uk
severnhospicegiftsinwills.co.uk



Registered Charity No: 914394

 **Severn Hospice**
here and at home



 Registered with
**FUNDRAISING
REGULATOR**

BERRINGTON VILLAGE HALL



The Village Hall in Berrington is available for hire (at very competitive rates).

Prices available on application. To make a booking or an enquiry.

Please contact **Penny Walker** on
01743 761 111 or
pennywalker21@yahoo.com

Spring Events

21 March – 12 April

Easter Adventures at Attingham

Enjoy a family adventure this Easter. Make your way along the trail and find activities for the whole family. (£3.50 + Normal Admission)

Thursday 2 April

Eggs and Nests, Shropshire Wildlife Trust

A free drop-in event at The Cut. Learn all about birds' eggs and nests, ready for Easter. Explore our collection of perfect replicas and real nests and have a go at the nest building challenge. Fun facts, the science behind it all and everything in between.

17 & 19 April

Cronkhill Open Days, Attingham Estate

Cronkhill is an unexpected vision of Italy in the Shropshire countryside. Take a look around at one of the eight open days a year. (Normal Admission Applies)

We're recruiting



We can offer you a rewarding career



Flexible shifts
Loyalty **rewards**
Career **progression**
Full **induction** training
Mileage **paid** between calls
Excellent rates of **pay** and **extra benefits**



and **so much more.....**

For more information
please call

01743 874343





PAINT HAUS

SHROPSHIRE'S PREMIER DECORATING COMPANY

**Interior & Exterior Painting
and Decorating**

www.painthaus.co.uk



📞 07985709453

✉ info@painthaus.co.uk



Free no Obligation quote



Debit and Credit Card Accepted



Fully Insured



12 Months
Guarantee

News from your Shropshire Councillor Susan Coleman

Parish Councils

There are seven parish councils in Severn Valley and at the time of writing all of them are looking at their finances to set their precept for 2026/27. A number have been able to make no increase whilst continuing to maintain key parish services like play parks, verges, green spaces, street lighting, defibrillator provision, and other general maintenance. Parish councillors are all volunteers who work hard on behalf of their community all year round - many have been doing it for decades - and they understand the pressures that households are under at the moment with rising costs and will try to keep any increase to a minimum.

Planning Applications

Housing developers are putting forward applications in great number. Ridout Way in Cross Houses and two just down the road in Cressage. I always attend parish Council meetings and public meetings with residents to understand their position and what changes they want to see. The National Trust application for the Outdoor Hub was passed on January 27th despite a lot of objections from myself and residents in Atcham and Wroxeter about the impact on the highway and disruption to people living close by. We hope planning conditions will address these concerns. I am also monitoring the activity around the construction of the solar farm in Berrington which is causing disruption to residents and a lot of mud on the roads.

Financial Situation

Shropshire Council has applied to the government for financial support to enable us to deliver services until the end of the financial year. The recent Fair Funding Review was supposed to make funding fairer for rural councils like Shropshire, instead it has left us with less money.

As a large rural county, essential services like waste collections, social care, and road maintenance across a large, spread-out area costs more money, yet the funding doesn't reflect this. The removal of the Rural Services

Delivery Grant stripped Shropshire residents of millions, the Fair Funding Review was supposed to address this. In fact, we will have £5million a year less over the next 3 years. The council will have to make tough choices about what services it can afford to provide in the future and it is likely to put up Council tax by the maximum permitted.

Please do email me with any concerns that you have and I will try my best to help you. I have a Facebook page where I share useful information, events and services so do please follow me to see what else I'm doing as your councillor.

I hope to start being able to come along to regular coffee mornings in our villages over the next few months to meet more of you. With Council meetings and my role on Shropshire Fire Authority my diary soon gets full up!

Cllr Susan Coleman

Working hard for communities in the Severn Valley division of Shropshire Council

Email:

susan.coleman@shropshire.gov.uk

Phone:

07843 111539

Facebook:

www.facebook.com/CllrSusanColeman



The Chapel Community Centre, Cross Houses Room Hire Rates 2026

Day / Session	Rate
Mon to Fri	
Morning	£40
Afternoon	£40
Evening	£40
Sat & Sun	
Day	£50
Evening	£65

Standard sessions consist of 4 hours.

Bookings can be made for timings outside of the session, subject to consideration for other bookings. We try to be as flexible as possible. Costings may be adjusted accordingly. Please request a firm price when booking.

You will be invoiced at the confirmation of the booking with 14 days to pay after the event. Please ensure the invoice number is quoted. Information regarding access to the building on the day will be sent to you beforehand.

The hirer must be 21 years old or over. Any event must have an adult over the age of 21 present for the whole event.

Please ensure curtains are closed in the main hall for evening rentals, as the hall faces a residential building.

Please do not park in the six parking spaces on the right side as you enter the car park as these belong to residents and visitors of the apartments opposite.

Music must cease at **12:00 midnight**. The evening session must finish by **12:30am**.

Please read the terms and conditions for the end of session.

Enquire online through
<https://hallbookingonline.com/chapel>

Email: chapelcommunitycentre@gmail.com

EST  1936

Frank Painter & Sons

FUNERAL DIRECTORS
Spring Gardens, Shrewsbury
01743 362024

— Incorporating —

Grindalls of Wem

FUNERAL DIRECTORS
Aston Street, Wem
01939 233903

4th Generation family owned
bereavement service, covering all areas
Day or Night

www.frankpainterandsons.co.uk

Golden Charter 
Funeral Plans Available

YOUR COMMUNITY CENTRE

Berrington Parish Council is looking for volunteers to help with the running of the Chapel Community Centre. The more who get involved, the lighter the load will be. It's a great way to get involved in your local community and help keep an important community asset up and running.

Whether you can help with providing access / locking the building up, checking the tidiness between bookings or fixing a leaking tap, any and all support is appreciated.

Tasks may include:

- Providing access to the building;
- Helping manage bookings;
- Tidying / maintenance;
- Inspecting communal areas;
- General housekeeping.

Please contact the parish council at berringtonpc@gmail.com for further information.



We're the Which? Insurance Brand of the Year for the second year running

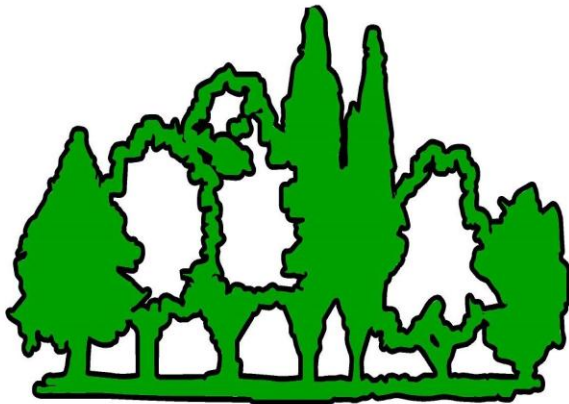


Whether it's for your car, home, farm or business, for quality insurance you can rely on, join us today.

Contact NFU Mutual Shrewsbury
on **01743 344 743**



S L Latter & M D Shepherd is an appointed representative of The National Farmers Union Mutual Insurance Society Limited (No. 111982). Registered in England. Registered Office: Tiddington Road, Stratford-upon-Avon, Warwickshire, CV37 7BJ.



TREE MAN TREE SPECIALIST

CLIVE HANCOX

07811 459 272

01746 766 038

clivehancox66@yahoo.com

- Crown Reduction / Lift / Thin
- Section Felling (Large Trees)
- Tree Planting
- Hedge Trimming
- All Types Of Fencing
- Landscaping
- Stump Grinding (Any Size)
- NPTC Qualified in all aspects of Tree Work
- Over 25 Years of Experience
- Fully Insured
- Friendly Advice & Free Quotes



MUCH WENLOCK & CRESSAGE MEDICAL PRACTICE

DO YOU NEED HELP WITH THE NHS APP?

Come and see our Digital Champion Amy Hudson. She will be at Cressage Practice on the 12th February 2pm-5pm and Much Wenlock Practice on the 26th February 2pm-5pm.

Please bring your phone or iPad with you and some form of photo identification or if already registered with Patient Online Access, your login details.

Due to the popularity of our last event these sessions are by appointment only. Please call the Practice to book an appointment.

Do more with the NHS App!

-  Order repeat prescriptions
 -  Book appointments
 -  View your records
- And much more...



MARDEN MEDICAL PRACTICE

When completing an eConsult, please give full, detailed information when submitting a request so clinicians can make accurate decisions without needing repeated follow-ups.

Patients are reminded that urgent eConsults require same-day availability, either to attend the surgery or take a call. We use a traffic-light triage system: red for urgent same-day needs, amber for timely but not immediate issues, and green for routine matters.

Mondays are the busiest day for urgent requests and non-urgent eConsult submissions are encouraged later in the week.

If a Care Navigator contacts you, this is because a GP has already reviewed your eConsult and they have asked the Care Navigator to contact you to arrange an appointment or provide signposting. Care Navigators are a part of the clinical pathway and are calling on GP instruction, not instead of GP input.

To help keep the eConsult service safe and effective:

- Please avoid submitting multiple follow-up messages unless requested
- Use eConsult for new issues rather than chasing previous outcomes



MUCH WENLOCK & CRESSAGE MEDICAL PRACTICE

Ever wondered what a Clinical Pharmacist does and how they can help you manage your health conditions?

Or what support is available for older patients locally?

What is a Cancer Care Co-ordinator and how do they support patients?

Who are the patient representatives liaising with the Practice on your behalf? What impact have they had over the past 12 months?

These questions and more will be answered at the:

Much Wenlock & Cressage Patient's Voice AGM

When Tuesday 12 May 2026 - 18:30 hrs

Where Much Wenlock Medical Practice, Kingsway Lodge, King Street,
Much Wenlock TF13 6BL

Who can attend? All patients registered at Much Wenlock & Cressage Medical Practice

Do I need to book? No, just turn up on the 12th May 2026 at 18:30

We look forward to seeing you there

EARLSDALE GARDEN SERVICES

PROFESSIONAL RELIABLE LOCAL SERVICE

Tree Work / Hedge Work

* Lopping * Pruning * Tall Trees Reduced / Felled * Hedges shaped and reduced

Garden Work

* Fencing erected / repaired * Slabbing * Paving / Paths * Shed Bases * Patios * Patio Cleaning * Gravelling * Turfing * Stone Walls * Garden Walls * Garden Clearance / Make Over * Registered Waste Carrier * Decking * Storm Damage Repairs

All Work Fully Insured

Shropshire, Mid Wales and surrounding areas covered

• Advertise in Yell / Thompson Local * References

For a free quotation Tel: 01743 792 924

or 07702 373 856 / 07772 294 633



Shropshire Ornithological Society

The home of birding in Shropshire

Meetings run from October to April at Bayston Hill Memorial Hall on the first Wednesday of each month, starting at 7.15pm. Entry charge £2 for non-members, members free. Refreshments are served during the interval for a small fee.

Wednesday 4th March, Dawn Balmer presents “Rare Breeding Birds in the UK and Bird Atlas 2027-2031” Originally from Shropshire, Dawn is Head of Surveys at the BTO, Secretary of the European Bird Census Council, and Chair of the Rare Breeding Birds Panel. Dawn will provide an update from the Rare Breeding Birds Panel, and also introduce plans for the launch of the next Breeding Bird Atlas with data collection due to start in 2027.

Wednesday 1st April, we have our AGM, followed by Paul Hopwood “Birds in a New Light: Thermal Imaging and Modern Ornithology” Discover the fascinating Journey of the West Mids Ringing Group – an award winning team renowned for their pioneering work with thermal technology in ornithology.

Please check the website in case of changes to the programme. You can also find details of our field trips on our website. To find out more visit

www.shropshirebirds.com



RSPB Shropshire Local Group

Meetings are held at Bayston Hill Memorial Hall on the 4th Tues monthly from September to April (exc Dec). Meetings start at 7.15pm. There is an entrance fee of £3 for members and £7 for visitors. Refreshments are served in the interval (no extra charge).

On **Tuesday, February 24th, Keith Offord** presents “**Life over 1000 feet**”. The uplands of Britain represent a major stronghold for wildlife, often because of their inaccessibility and lack of intensive cultivation. From Pied Flycatcher in ancient oak woodlands to Merlin on the high moors, this talk explores the various habitats and the wildlife to be found within.

On Tuesday, March 24th, Peter Carty brings us a “**Beginners Guide to Birdsong in Shropshire**”. Get ready for Spring with a talk on the bird song of South Shropshire.

To contact us and find out more about what we do (including our monthly field trips): you can visit <https://group.rspb.org.uk/shropshire> or find us on Facebook [RSPB Shropshire Local Group](#)





- **NEW TYRES SUPPLIED AND FITTED RIGHT AT YOUR DOOR!**
- **NO EXTRA COST – A TOTAL CONVENIENCE SERVICE**
- **ALL MAKES AND SIZES INC RUN FLAT**
- **PUNCTURES REPAIRED, BALANCING & TRACKING**
- **CHOOSE THE DATE & TIME THAT SUITS YOU!**
- **ORDER ONLINE OR PAY VIA MOBILE CHIP & PIN**

Hometyre

MOBILE TYRE SERVICES

"Buy online & we come to you"
www.hometyre.co.uk



TEL: (01743) 861183 FREE: 0800 7839310 EMAIL: INFO@HOMETYRE.CO.UK

HOMETYRE.CO.UK

A J Findlay Property Services

25 years building and landscaping experience. Fully insured.

All aspects of interior and exterior carpentry, joinery and brickwork.



I have covered a very wide variety of projects in the past so please feel free to contact me. Any work considered.

To view examples of my recent work and reviews please check my Facebook and Instagram pages.

Contact Alex to arrange a free estimate.



07485 404410



ajfindlaypropertyservices@gmail.com



facebook.com/ajfindlaypropertyservices



@ajf_carpentry_and_joinery



EMMA J

HAIRSTYLIST
(25 years experience)



I am fully qualified in a wide range of hairdressing services for ladies, gents & children

I have a home salon in Sutton Farm SY2 or can offer an in home mobile service

07791606145
free consultations

Credit/Debit card facility
Fully insured

 EmmaJhairstyling

 EmmaJhairstyling



Pond Restorations on Attingham Estate Farmland

The following is an extract from the Attingham Estate Community Newsletter:

We continue work at pace to restore several ponds on tenanted farmland.

Restoration work is bringing overgrown and silted up ponds back to life and boosting the estate's natural flood-management capacity.

Contractors have cleared dense vegetation, opened up shaded areas, and carefully excavated silt to deepen the ponds and improve water storage. Piles of logs have been left around the pond to provide refuge for amphibians and reptiles and valuable habitat for a variety of invertebrate species.

The ponds can now hold more water during heavy rain, reducing the amount that enters the River Severn at peak times and actively demonstrates how nature-based solutions are vital to water management strategies.

Jane Birch, who heads the Attingham Nature Recovery Project for the National Trust, said: "The improvements are already transforming the ponds into richer habitats.

"With more light, cleaner water and better structure, they'll support a wider range of wildlife, from insects and aquatic plants to birds, mammals such as bats, amphibians and reptiles, helping nature thrive across the estate and providing a spectacle for visitors as well."

The work is being carried out as part of a demonstrator project funded by the Severn Valley Water Management Scheme (SVWMS) and managed by Shropshire Council.

The project is one of the SVWMS' eight demonstrator projects to have received funding and will test approaches that aim to reduce flood risk within the upper River Severn catchment area.

By creating wetlands, restoring ponds, and planting trees to slow the flow of water through the estate, land on the Attingham Estate has the potential to store an additional 22,000 cubic metres of water.

Pete Lambert, SVWMS demonstrator project manager, added: "The demonstrator projects play an essential role in informing the emerging strategy for water management in the Upper Severn.

"The modelling shows that Attingham Estate alone has the potential to store 22,000 cubic metres of water and if interventions, such as the ones being used there can be replicated at scale across the upper Severn catchment, we have the potential to make a significant contribution to managing peak flows across the catchment, demonstrating how nature-based solutions can work at scale to build long-term resilience."

If you want to know more about nature recovery work at Attingham, or want to volunteer for future surveys (training can be provided) please visit our web page for more information, scan the QR code below or email attingham@nationaltrust.org.uk





All Things Travel - Where your journey begins



Dreaming of your next getaway? All Things Travel is here to make it happen!

Whether you're looking for a relaxing escape, a family adventure, or a tailor-made itinerary, we can book any package or bespoke holiday with any budget in mind

**Call or email now and lets start
planning your next holiday!**

Phone: 07854 560071

Email: kelly@allthingstravel.net

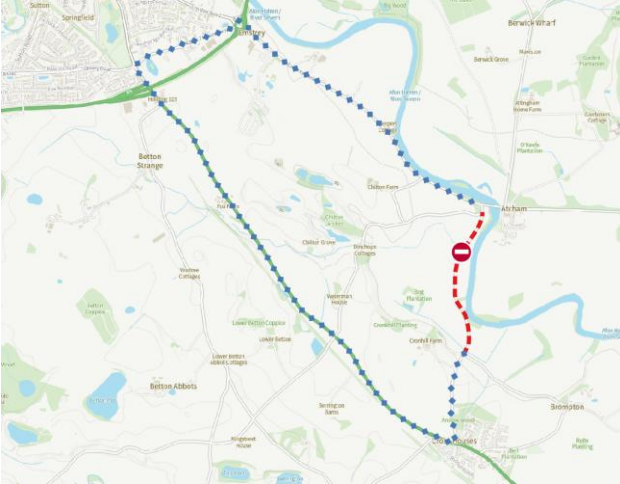
Follow us on facebook and instagram
to catch our latest travel offers!



UPCOMING ROADWORKS

When? 30th March to 14th April 2026
Where? Cross Houses - Atcham lane
Why? Chilton Bridge Repairs
Reference: UJ215BR-1500092-1

The road will be closed from the junction to Brompton (opposite Cronkhill) to the junction close to the B4380 for just over two weeks to enable bridge repairs.



Stay & Play for our littlest residents, aged 0 – 4 years

Wednesdays (Term Time only), 9.45am until 11am

Chapel Community Centre, The Chestnuts, Cross Houses, SY5 6JH

Free Entry & free on-site parking. Low level entry - wheelchair and pushchair friendly.

We are a Nut free zone

Visit/follow our Facebook page for updates and information 'little Conker's stay and play group'

<https://www.facebook.com/groups/539343969941309>



Leaton Forest Firewood

Locally Grown, Traditionally Seasoned Firewood

Barrow Bags
Premium grade, £50
B grade, £45

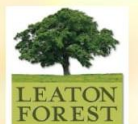
Bulk Bags
Premium grade, £150.00
B grade, £125.00

Kindling £8.00

Free Local Delivery

To order;
Email; trees@leatonforest.co.uk

or
order through our website;
[www.leatonforest.co.uk/
firewood-log-sales/](http://www.leatonforest.co.uk/firewood-log-sales/)



USEFUL TELEPHONE NUMBERS

Atcham Parish Council Clerk	01691 622093	NHS Direct	111
Cressage Surgery	01952 511166	Samaritans	01743 369696
Marden Surgery	01743 241313	Shropshire Council	0345 678 9000
Riverside Surgery	01743 367891	Severn Trent Water	0800 783 4444
Shrewsbury Police Station	0300 333 3000	Shropshire Home Point	0300 303 8595
Bromford Housing Association	0330 1234 034	Shrewsbury Dial-a-Ride	01743 450350
Homes Plus	0800 048 8955	Shropshire Highways	0345 678 9006
Councillor Susan Coleman	07843 111539	Bins & Recycling (missed collections)	0345 678 9007
Citizens Advice Bureau	0808 278 7894	Royal Shrewsbury Hospital	01743 261000
Age UK	01743 233123	Princess Royal Hospital, Telford	01952 641222
Domestic Abuse Helpline	0808 2000 247	National Grid (Emergency)	0800 6783 105
Cruse Bereavement Care	0808 808 1677	National Grid	0800 096 3080
Berrington Parish Council Clerk	07379 213308	RSPCA (Cruelty Hotline)	0300 1234 999
Gas Emergency Services	0800 111 999	Floodline	0345 988 1188
National Rail Enquiries	03457 484950	Dog Fouling (Reporting) – Longden Road Depot	0345 678 9006
Crimestoppers	0800 555 111		



Peat-Free Compost

Topsoil

Bark Mulch

Woodchip

Locally produced in Shropshire. Loose and bagged - delivery and collection available

www.carbonearth.co.uk

Call **01743 821226/ 07935293225** or email products@carbonearth.co.uk