



THE VILLAGE PUMP

May - June 2026

No. 183



A newsletter for Atcham, Berrington, Betton, Brompton, Cantlop, Cross Houses and Eaton Mascott



Berrington Parish Council

Atcham Parish Council

Website: www.berringtonparishcouncil.org.uk

Clerk: Lisa Harris

Email: clerk@berringtonparishcouncil.gov.uk

Members: Henry Carpenter (Chair)
Hamish Eccles (Vice-Chair)
Amy Yeomans
Sharlene Hess
Marcia Rathbone
Andrew Abbott
Charlotte Morris
* Vacancy *
* Vacancy *

Meeting Dates: 7pm on 1st Thursday of the month
Thursday 4th June 2026
Thursday 2nd July 2026
No meeting in August

Venue: Chapel Community Centre, Cross Houses

Facebook: www.facebook.com/BerringtonParishCouncil

Website: www.atchamparishcouncil.gov.uk

Clerk: Alison Utting

Email: clerk@atchamparishcouncil.gov.uk

Members: Laura Dixon (Chair)
Stephen Cook
Cathy Ritchie
Gareth Jones
Martin Ruston
Rob Trow
Glen Perks

Meeting Dates: Usually 7:30pm on 2nd Wednesday every other month
Wednesday 8th July 2026
Wednesday 9th September

Venue: The Old Malthouse, Atcham

Facebook: www.facebook.com/atchampc

Please note whilst the above dates were correct at the time of publication, they are subject to change, with details provided on the Berrington or Atcham Parish Council websites and the agenda prior to each meeting.

The Village Pump

The Village Pump is published every two months and distributed to 700 households in the parishes of Atcham and Berrington. Our printing costs are met by income from advertising. Distribution is carried out by a team of volunteers. If you feel you could help your community by delivering the Pump in your area please contact the editor. The more volunteer deliverers we have the smaller the area to deliver.

Advertising rates are:

Full Page: £25 per edition or £110 per annum
1/2 Page (Landscape): £12.50 per edition or £55 per annum
1/4 Page (Portrait): £10 per edition or £45 per annum
1/4 Page (Landscape): £10 per edition or £45 per annum
1/8 Page (Landscape): £7.50 per edition or £30 per annum

**Deadline for submissions
for August edition:
7th August 2026**

If you represent a not-for-profit organisation or are organising a local event, we do not charge for advertisements in these cases.

Advertisements need to be paid for in advance. If you would like to place an advert in the Village Pump then please contact the Editor: thevillagepump@outlook.com. We look forward to hearing from you.

ADVERTISEMENT DISCLAIMER

Please note ACCEPTANCE OF ADVERTISEMENTS DOES NOT IMPLY ENDORSEMENT. THE EDITOR RESERVES THE RIGHT TO EDIT ARTICLES IF SPACE IS LIMITED.

Do you have an idea for an article, would like an event or something of interest to be shared in the magazine? Then please contact the Editor, Andrew Abbott, at thevillagepump@outlook.com.

Cover photo: © James Healey



IN THIS ISSUE...

Atcham Parish Council update	Page 4
Salop Leisure Planning Application	Page 6
News from St. Eata's at Atcham	Page 8
Photo Competition	Page 9
Berrington Parish Council update	Page 10
Cressage Primary School	Page 11
Cross Houses book club	Page 12
Summer Events	Page 14
Policing	Pg 16/17
Councillor Susan Coleman	Page 18
Cross Houses Community Centre	Page 19
Medical Practice updates	Page 22
The Village Pump	Page 25
Roadworks	Page 27
Useful Telephone Numbers	Page 28

We're keen to hear ideas for interesting local articles to go in future editions of The Village Pump, so if you have any thoughts or feedback, please send an email to thevillagepump@outlook.com.

It was interesting this month to have the opportunity to take a look through the history of the community newsletter, from its inception in 1996 through to how the publication is today. However, it has highlighted that there is a large gap in the archive, from ~2006 to ~2019. More recent copies have been made available digitally, which are easier to preserve. So, if anyone has kept copies from the late 2000s into the 2010s, please get in touch.

The community magazine is an important asset to the community and we want to not only keep it going but for it to thrive. The aim is to include a mixture of interesting articles, parish updates, service offerings and useful advertisements from local tradespeople and businesses.

Many thanks to Jim Healey for this edition's outstanding cover image of Cross Houses, taken from a light aircraft. It shows the surrounding countryside superbly, and once again highlights the untapped potential of the former Severn Valley Railway line.

With the days now at their longest, do send in your Summer photos for the next issue!

We are still looking for people to help with the delivery of The Village Pump; help is greatly appreciated.

Andrew Abbott

DO YOU HAVE AN EVENT TO PUBLICISE OR A STORY TO TELL?

We want to hear from you!

Please email article submissions or event promotions to thevillagepump@outlook.com.

It could be local history, news, anecdotes, photographs, events, gardening tips, obituaries, recognition of a good deed... The Village Pump is your local forum!



Hardwood Logs

Free local delivery

Un-Seasoned, Barn Stored & Kiln Dried

Visit our website for our full range of logs, kindling, log stores & more

01746 785606

www.logs2yourdoor.co.uk



The Annual Community Meeting, held on 13 May at the Malthouse, was a very successful evening with lots of residents as well as representatives of local businesses and organisations. Big thanks to Cllrs Dixon and Ritchie, who provided the refreshments.

Here is a brief summary of proceedings. More detailed minutes are available on our website.

PARISH COUNCIL REPORT

Cllr Laura Dixon presented the Parish Council's annual report for 2025–26 (available on website). She welcomed new councillors Glen Perks and Cathy Ritchie, and thanked Simon Adney and Keith Daley, who stood down this year.

SHROPSHIRE COUNCIL UPDATE

Cllr Susan Coleman reported on ongoing work locally and emphasised her availability should residents have any matters of concern to raise. She also noted leadership changes at Shropshire Council.

WEST MERCIA POLICE

Police updates included continued speed enforcement using TruCam technology, recent rural theft incidents and cannabis farm discoveries in the wider area. Residents were encouraged to report suspicious activity via 101 or 999 in emergencies. Rumours of car break-ins at Attingham Park were confirmed as unfounded.

MEMORIAL HALL

The hall committee has expanded to nine trustees and continues to improve facilities with WiFi, new lighting and upgraded meeting equipment. Despite regular bookings, overall

use remains low and funding is being explored to address major repair needs.

ST. EATA'S CHURCH

The church reported regular Sunday attendance, monthly coffee mornings and a fundraising campaign to restore the tower. The Rector, Andrew Knight, has recently been appointed a Canon.

SALOP LEISURE / LOVE2STAY

Salop Leisure outlined forthcoming plans for a retirement village at the Emstrey site, featuring more than 180 modular homes developed over five years. A new mini-roundabout is proposed to improve access, while caravan storage would remain.

MYTTON & MERMAID CAR PARK

Brunning & Price presented revised plans for an additional car park, reducing spaces from 94 to 62 and introducing landscaping and screening measures. The proposal aims to address parking pressures affecting both the business and residents and to address concerns that led to the previous application being refused.

Note: This application has now been published and the parish council will consider their response at an additional meeting, to be advertised.

NATIONAL TRUST ATTINGHAM

New general manager Nick Harris introduced himself. Attingham Park welcomed 610,000 visitors in 2025–26, with most visitors coming from within 30 minutes of the site. Updates included flood management work, archaeology displays, parking improvements and ongoing plans for the Outdoor Hub. Efforts continue to reduce traffic and parking impacts on the village.

Do you have any comments? Or a new idea that might benefit the community? Please come along to one of our meetings or contact the Clerk. Don't forget to let us know if you have any community news that you would like us to share online. Photos of the village and surrounding countryside are also welcome, so if you snap a good view do send it to us.

Website: atchamparishcouncil.gov.uk

Facebook: [Atcham Parish Council](https://www.facebook.com/AtchamParishCouncil)

Parish Councillors: Laura Dixon (Chair), Stephen Cook, Gareth Jones, Martin Ruston, Rob Trow, Cathy Ritchie, Glen Perks

Clerk: Alison Utting 01691 622093 clerk@atchamparishcouncil.gov.uk



Atcham Parish Council

COMMUNITY CONCERNS

Questions were raised about ownership of the Old Bridge and debris accumulating around bridge structures. Flood management and river maintenance issues will be discussed further, with external agencies to be invited to the next parish council meeting.

The Community Meeting was followed by the annual meeting of the parish council, where Laura Dixon was re-elected as Chair and Gareth Jones as Vice Chair. End-of-year accounts and governance were approved and are available to view on the website. Money has been saved by changing insurance provider. It was resolved to again apply for the Environmental Maintenance Grant, which helps to pay for groundskeeping around the village.

ATCHAM VILLAGE HALL



(Atcham War Memorial Hall)

Available for hire for classes, meetings, parties and events

Contact the Booking Clerk:

atcham.villagehall@btinternet.com

Or telephone 07485 029331

Wordsearch

Atcham Betton Cantlop Eaton Mascott
Berrington Brompton Cross Houses

C	A	H	E	R	G	U	O	C	P	E
R	Z	A	T	C	H	A	M	R	K	A
A	M	U	S	I	H	C	N	O	H	T
F	A	B	U	L	B	A	C	L	I	O
O	B	E	R	R	I	N	G	T	O	N
U	T	T	R	I	E	T	I	O	N	M
B	E	T	T	U	N	L	I	A	X	A
C	R	O	S	S	H	O	U	S	E	S
A	R	N	E	R	B	P	W	A	S	C
O	Z	E	O	I	N	G	S	S	T	O
B	R	O	M	P	T	O	N	E	E	T
E	N	T	I	N	C	S	E	S	N	T

Sudoku

Complete the grid so that every row, column, diagonal and 3x3 box contains every digit from 1 - 9 inclusive.

		4	9	5	1	7	3	2
5	3							
				2		6		
		5				2		
	7	6				8		4
		9			6	5	7	
9	2	7		1				6
	5				9	1		8
	1			3	2	4	9	7

SALOP LEISURE – LOVE2STAY

Plans have been submitted for the redevelopment of the Love2Stay site at Emstrey, to the south-east of Shrewsbury, into a residential “care village” for people over 55. The proposal, submitted for Salop Leisure, is intended to provide a mix of housing, care provision and community facilities within a landscaped, semi-rural setting.

The site currently operates as a high-end holiday destination, including touring caravan pitches, lodges and leisure facilities. The proposals would repurpose much of this existing infrastructure due to a reported decline in demand for touring caravan use and a need for specialist accommodation for older people in Shropshire.

The development would be delivered through a hybrid planning application. The main part of the scheme seeks full permission for a retirement community, while outline consent is sought for a care and nursing facility and additional bungalows on part of the site.

The proposals focus on a community of single-storey modular homes designed for over-55s. The plans include 118 retirement lodges, alongside two staff dwellings and a range of communal facilities. The homes would be adaptable to residents’ changing needs, including wheelchair accessibility, and would be constructed using modular methods to improve efficiency.

A separate outline element includes a residential care and nursing home, together with around 25 retirement bungalows. This is intended to allow residents to remain within the same community as their care requirements change over time.

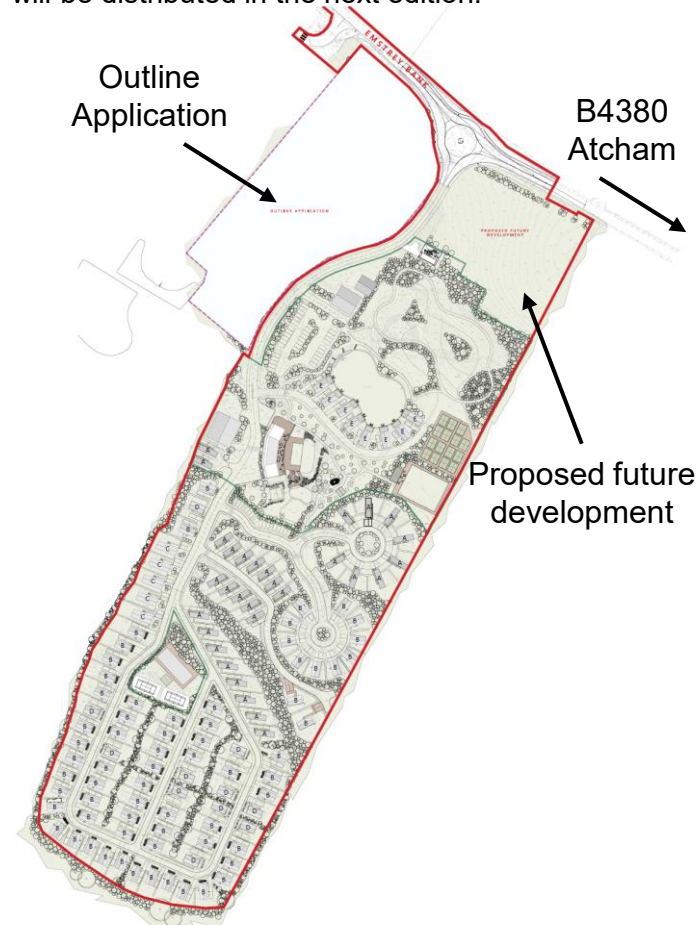
The scheme places emphasis on shared facilities and outdoor space. Proposed amenities include a community hall, café and treatment hub, bowls green and pavilion, allotment gardens, gym facilities, and paddle or pickle courts. Wellness features would include hot and cold water pools, meditation gardens, and nature trails, many of which would make use of existing landscape features such as ponds and woodland.

Existing buildings on the site would be retained and repurposed where possible, including the current leisure hub, which would become a wellness and care centre. The overall layout would also retain elements of the existing road network and landscaping, although caravan pitches would be removed to make way for permanent residential units.

Access to the development would be enhanced through the creation of a new roundabout on the B4380, alongside improved pedestrian and cycle links connecting the site to surrounding areas and into Shrewsbury.

Landscaping proposals include the retention and enhancement of existing planting, water features and topography. The scheme also aims to deliver biodiversity improvements, with long-term landscape management.

Atcham Parish Council convened a meeting on Thursday 4th June 2026 (after The Village Pump had gone to press). Further information will be distributed in the next edition.

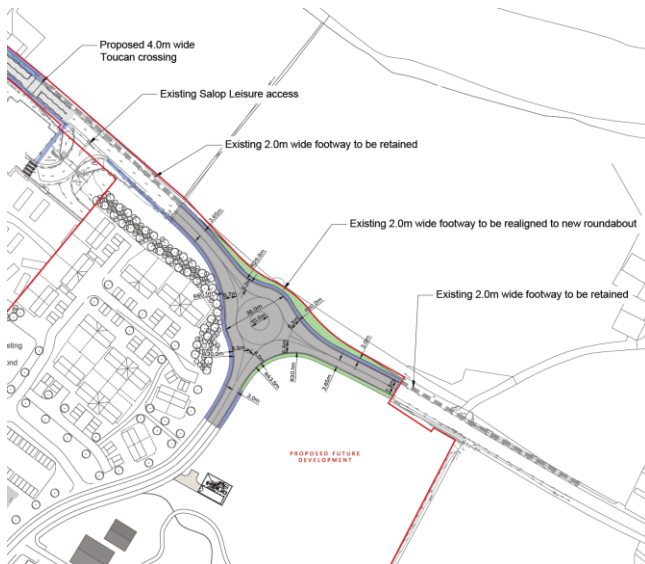


SALOP LEISURE – LOVE2STAY

The Planning Application reference is **26/01446/FUL**.



Changes to the road layout are proposed, including a new roundabout on the B4380, as shown below.



For all your roofing needs, get in touch today

- ★ Slipped or broken tiles
- ★ Full re-roofing
- ★ Gutter repairs
- ★ Lead work



Phone number : 07888 258 872

Email: laroofing2024@gmail.com

FOR THE LOVE OF ANIMALS 

Dog walking and pet services

Tel: 07805 727 697

References available upon request



Church Services and News from St. Eata's at Atcham

There is a Eucharist (BCP) every Sunday at 11am. Everyone is most welcome at this Service. Tea, coffee and cake is served on alternate Sundays.

Sunday 7th June - Service at 11am

Sunday 14th June - Service at 11am

Sunday 21st June – Service at 11am

Sunday 28th June – Service at 11am

Sunday 5th July – Service at 11am



ADVANCE NOTICE

Sunday 5th July 2026 – Church Fete and Duck Race from 2pm. Donations for the Tombola, Raffle, Bric a Brac stall and Book stall all gratefully received and can be left in the back of the Church.

COFFEE MORNINGS in Church on the 1st Friday of each month from 10:30 onwards

Many thanks to the Dixon family for hosting the Animal Service for Pets recently, which was very well attended and enjoyed by all. It is always one of the favourite occasions in the St. Eata's calendar.

✠ Berrington with Betton Strange ✠ Church Preen ✠ Cressage ✠ Cound ✠ Easthope ✠

THE WENLOCK TEAM OF PARISHES

✠ Harley ✠ Hughley ✠ Kenley ✠ Sheinton ✠ Shipton ✠ Stanton Long ✠ Much Wenlock with Bourton X

For details of services, more information and contact details regarding the Wenlock Team of Parishes please visit www.wenlockchurches.co.uk or call 01952 727396



Photo Competition

Would you like to see your photo featured on the cover of *The Village Pump*?

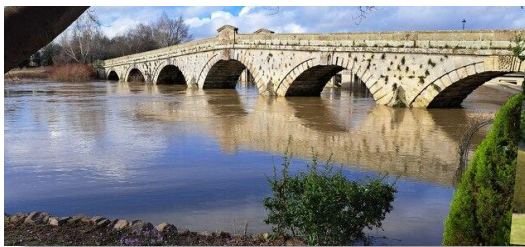
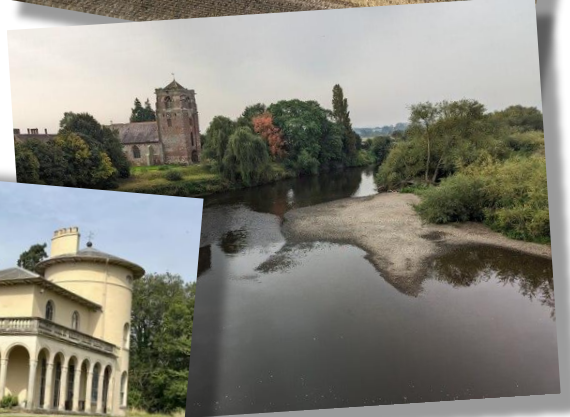
Then enter the Summer 2026 photo competition!

Simply take a photo at any time during the summer months and submit it to

thevillagepump@outlook.com.

The winning photo will be featured in the next edition of *The Village Pump*.

Eligibility: Photo must be taken in the parishes of Atcham or Berrington. All photos must be the original work of the entrant. Entries must not infringe upon the trademark, copyright, moral rights, intellectual rights, or rights of privacy of any entity or person. The editors decision is final.



Interested in growing your own vegetables and fruit?



Your nearest allotment site is on the Chestnuts estate in Cross Houses and we will have some plots available for 2026.

Call Cameron on 01743 761443 for details.

Cound & District Crafters

Meetings are held on the first Monday of each month at Cound Guildhall 10am - 12 noon. £5 per session, different crafts each meeting.

Everyone is most welcome - new ideas can be incorporated and tried so please come along and join us.

Please contact Sue on 01743 761355 or email sushedden52@gmail.com for more information.



BERRINGTON PARISH COUNCIL

COMMUNITY SPEED WATCH

James Healey, who is organising the Community Speed Watch scheme, updated the parish council on progress. West Mercia Police are proving to be slow to respond. The matter is to be escalated through further contact with both the Police and Crime Commissioner's office and the Safer Neighbourhood Team to clarify legal requirements and next steps.

PARISH COUNCIL WEBSITE

A significantly overhauled Berrington Parish Council website has been launched. Residents are directed to www.berringtonparishcouncil.gov.uk to find out the latest information.

DEFIBRILLATORS

A new defibrillator is to be installed at the Petrol Station to replace the previous one. The Parish Council is proposing to organise community defibrillator training for any interested members of the community – dates to be confirmed.

BERRINGTON VILLAGE PUMP

Significant works have been undertaken to rectify the ground issues at the pump and the adjacent footpath which has been closed for several years has now been reopened.

BORETON BRIDGE

The damaged Boreton Bridge (which is Grade II listed) is to be repaired in July. Shropshire Council's Bridges and Structures Engineer also confirmed that plans for a replacement bridge are in the council's five-year plan, but no further details have been provided.

CROSS HOUSES COMMUNITY CENTRE

The parish council is continuing to look for volunteers to help with the running of the

Chapel Community Centre. The more who get involved, the lighter the load will be.

Whether you can help with providing access / locking the building up, checking the tidiness between bookings or fixing a leaking tap, any and all support is appreciated.

Please contact the parish council at berringtonpc@gmail.com for further information.

The next parish council meeting will be held on Thursday 2nd July 2026.

THANK YOU – LORNA PARDOE

The Parish Council would like to say thank you to our outgoing clerk, Lorna Pardoe, who is now retiring. Happy retirement, Lorna!



**James Wright
Handyman and
Painting**



Small jobs welcome
Fully insured
Contactless payments

Find me on Facebook via Cross Houses Community group

07562 864 436
jrwright@hotmail.co.uk



CHRIST CHURCH C.E. PRIMARY SCHOOL, CRESSAGE

Our New Early Years Outdoor Provision

We are delighted to see our long-awaited Early Years outdoor provision come to life this May, following over a year of careful planning and aspiration. The completion of our new outdoor provision marks an exciting milestone for our school community and most importantly, for our youngest learners.

At Christ Church, we are deeply passionate about the role the outdoors plays in children's learning and development. We firmly believe that high-quality outdoor provision is not an 'extra', but an essential part of Early Years education. The new 60m² covered area will enable our children to access outdoor learning opportunities throughout the year, whatever the weather, ensuring consistency, freedom and extended time to explore, discover and grow.

The outdoor environment is a powerful "enabling environment," supporting all seven areas of learning within the Early Years Foundation Stage. It provides rich and varied opportunities for children to develop holistically - physically, socially, emotionally and cognitively. Through

outdoor play, children can strengthen their bodies, improve coordination and develop resilience, while also benefiting from the positive impact that fresh air and open space have on mental wellbeing. This environment not only feels calm and inviting but also encourages children to connect with the natural world - an essential part of fostering awe, wonder and respect for their surroundings.

We are incredibly excited about the difference this new provision will make. It will transform the way our Early Years children learn, giving them greater independence, more meaningful sensory experiences and the freedom to follow their interests in a stimulating and nurturing environment. This investment reflects our unwavering commitment to giving every child the very best start in life.

We would warmly welcome families to come and look around and see first-hand how this exciting new space is already enriching children's learning and development.

Emma Clarke, Acting Head of School



We have spaces in our Nursery for children who are 3 or over in the Summer Term or September.

We have a wonderful setting and accept 15 or 30 hour vouchers. As a school we are 'not for profit' which means we don't have lots of extra charges and you can use your hours flexibly. Please come and have a look at our nursery, Little Acorns and meet our staff and chat to us informally.

Would you like to visit us and see our friendly, village school?

You can ring the office: **01952 510383** and make an appointment to come and see school during the school day or afterwards. We love showing prospective parents around as we are very proud of our school.



Follow us on FaceBook for regular news and updates: @ChristChurchSY5

Our website is also full of updates and information:

christchurchcressage.co.uk

You can email us on admin@christchurch.shropshire.sch.uk

Atcham & Cross Houses Mobile Library

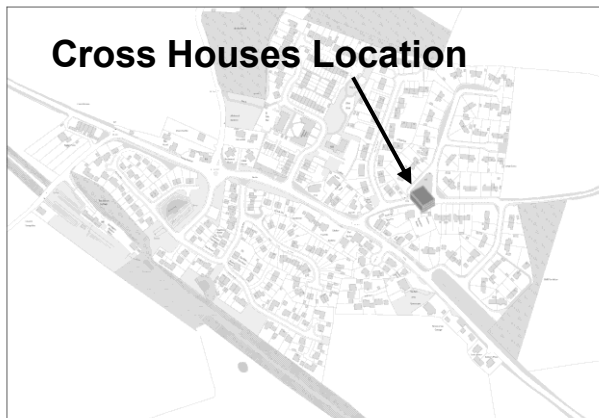
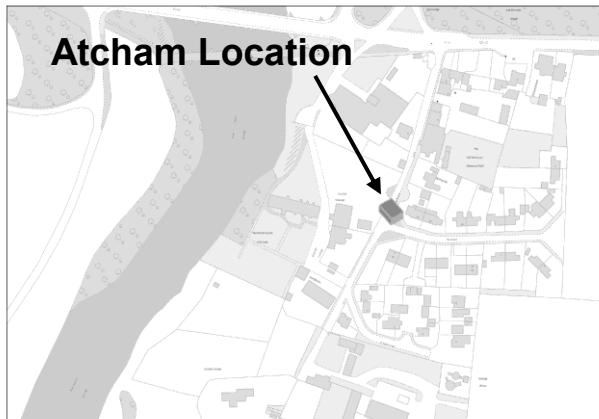


CROSS HOUSES

Lower Cross, 10:10 – 10:40
Friday 13th February & 27th February
Friday 13th March & 27th March

ATCHAM

By The Glebe, 13:20 – 13:35
Friday 13th February & 27th February
Friday 13th March & 27th March



CROSS HOUSES BOOK CLUB

Do you enjoy reading and would like to discuss your ideas and thoughts with like minded people - then please come and join our small, free, friendly and local book club.

For more information, please call Sue on **01743 761355** or email sueshedden52@gmail.com.

Reading List 2026

18th June – The Deadly Detective Agency by Ann Parker

16th July – Salmon Fishing in The Yemen by Paul Torday

August – Lessons In Chemistry by Bonnie Garmus OR Death in the Crypt by Fliss Chester

17th September – The Countdown Killer by Sam Holland

15th October – Come Sundown by Nora Roberts

19th November – When Breathe Becomes Air by Paul Kalanithi

17th December – A Christmas Railway Mystery by Edward Marston

ADVERTISE IN THE PUMP

Want to see your business featured in The Village Pump? Get in touch – thevillagepump@outlook.com. Rates can be found on the inside cover on Page 2.

The Village Pump is widely read by people throughout the parishes of Atcham and Berrington and beyond – and unlike a social media advert which is passed in the flash of an idle scroll, not to mention your advertising money not staying local, people value The Pump and return to it time and time again... and your money is reinvested into the local community.



Hardwood LOGS

TWO LOAD SIZES AVAILABLE
NO DELIVERY CHARGE

Lengths cut to suit your needs
m: 07860 419025
t: 01694 731 621 (after 7pm)



COLUMN FLOWER CLUB

CHAPEL COMMUNITY CENTRE, THE
CHESTNUTS, CROSS HOUSES, SY5 6JH

Monthly Tuesday Meeting: 7.00pm (for 7.15pm start)

Pop along one evening to see us, everyone is made very
welcome. Visitors fee £5

Knowledge of flower arranging is not essential.

Between us we help each other and also learn from one
another.

9th June 2026

‘The World of Flowers in Art’

Talk & Floral Accompaniments by Debbie Murphy

14th July 2026

Club Summer Social Evening

August

No meeting – summer break.

**For more information/contact details visit our
website**

<https://www.columnflowerclubshrewsbury.co.uk>

COUND AND DISTRICT TENNIS CLUB



**Come and join in our fun and social tennis
community**

<https://clubspark.lta.org.uk/coundanddistricttennisclub>

or use our Cound and District Tennis Club Homepage QR Code



For membership enquiries please contact us at membershipcound@btinternet.com

**Adult beginners courses, adults drills & cardio, Juniors Saturday
coaching and private lessons**

Please contact Club Coach Graham Hart on 07960 970 017 or email
hartg734@aol.com

Or find us on Facebook!



Summer Events

Until September 6

Pokémon TCG Mega Evolution Trail at Attingham

Get active outdoors on our Pokémon Trading Card Game Mega Evolution Trail. Team up as a family to search the gardens for each Mega Evolution Pokémon, discover their powers, and complete your own challenges. Trail sheets will be available to collect on the day. Normal admission applies (free for National Trust members).

Until September 27

Attingham Unearthed | The Finds

Step into the Silver Vaults at Attingham and uncover the story of a remarkable archaeological journey. Attingham Unearthed 2025 brought together expert archaeologists, dedicated volunteers and local community groups, all working side by side to explore the hidden history beneath the parkland.

25 July – 9 August

Church Stretton Arts Festival

The 2026 Festival runs from 25th July to 9th August. This year we are celebrating 60 years since the Festival was founded, and we have a wonderful selection of events lined up. Full details of what's on offer can be found on the Arts Festival Website strettonfestival.org.uk.

27 – 28 June

Shrewsbury Food Festival

A vibrant two-day family event in The Quarry, bringing together independent food producers, street food vendors, top chefs, local brewers and entertainers. Visitors enjoy diverse food and drink, chef demonstrations, shopping, live music and free children's activities, creating a lively, inclusive celebration of Shropshire's local food culture and community spirit.

EARLSDALE GARDEN SERVICES

PROFESSIONAL RELIABLE LOCAL SERVICE

Tree Work / Hedge Work

* Lopping * Pruning * Tall Trees Reduced / Felled * Hedges shaped and reduced

Garden Work

* Fencing erected / repaired * Slabbing * Paving / Paths * Shed Bases * Patios * Patio Cleaning * Gravelling * Turfing * Stone Walls * Garden Walls * Garden Clearance / Make Over * Registered Waste Carrier * Decking * Storm Damage Repairs

All Work Fully Insured

Shropshire, Mid Wales and surrounding areas covered

• Advertise in Yell / Thompson Local * References

For a free quotation Tel: 01743 792 924

or 07702 373 856 / 07772 294 633



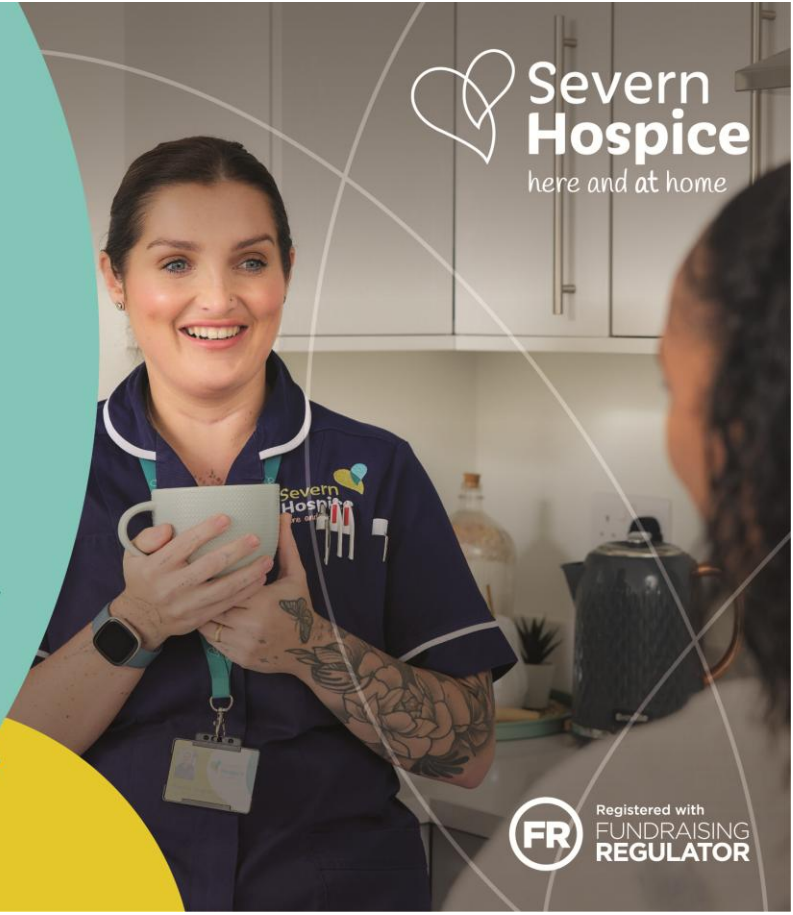
Severn Hospice care is supporting you at home

A gift in your will makes this possible

For more information get in touch with Sophie Higgins, Individual Giving Manager
01952 221351
individualgiving@severnhospice.org.uk
severnhospicegiftsinwills.co.uk



Registered Charity No: 914394



BERRINGTON VILLAGE HALL



The Village Hall in Berrington is available for hire (at very competitive rates).

Prices available on application. To make a booking or an enquiry.

Please contact **Penny Walker** on
01743 761 111 or
pennywalker21@yahoo.com



Stay & Play for our littlest residents, aged 0 – 4 years

Wednesdays (Term Time only), 9.45am until 11am

Chapel Community Centre, The Chestnuts, Cross Houses, SY5 6JH

Free Entry & free on-site parking. Low level entry - wheelchair and pushchair friendly.

We are a Nut free zone

Visit/follow our Facebook page for updates and information 'little Conker's stay and play group'
<https://www.facebook.com/groups/539343969941309>





John Campion
Police and Crime Commissioner
West Mercia

Get involved

Have your say on the Government's plans to merge police forces across England and Wales.

This is your chance to share your views - whether you support the proposals or not.

The PCC will share your views with the Government to form part of their review.



www.westmercia-pcc.gov.uk

The consultation closes on Monday 15 June.



PAINTHAUS

SHROPSHIRE'S PREMIER DECORATING COMPANY

INTERIOR & EXTERIOR PAINTING & DECORATING SPECIALISTS

Delivering high-quality finishes with careful preparation and expert craftsmanship

- ✓ Fully insured
- ✓ 12-month guarantee

Clean • Professional • Reliable

Call Ryan for a quotation
07985 709453 painthaus.co.uk



POLICING

While waiting for your kettle to boil, you can have your say on policing...

Got a spare few minutes? Police and Crime Commissioner John Campion has launched a short consultation to give you an opportunity to have your say on the Government's proposals to create 12 'mega police forces'.

As this could be the biggest shake up to policing in six decades, the PCC wants to make sure you can share your views on this change. He will share the public response directly with the Government to consider in their review.

The consultation closes on Monday 15th June. Have your say by visiting the West Mercia PCC website - www.westmercia-pcc.gov.uk



We are a small group of very friendly ladies who meet on the third Monday of the month, 10am - 12 noon at the Community Room, Noel Hill Road for a chat and to make items for charity events which we run twice a year for local causes - everyone is welcome and you don't have to worry about ability - we are all different and learn from each other whilst having a laugh.

We welcome new members, please come along and join us.

For more information please contact Sue on 01743 761355 / 07773 161635 or email sueshedden52@gmail.com



News from your Shropshire Councillor Susan Coleman

Staffing changes at Shropshire Council

The new Chief Executive is Tanya Miles. She has lived in Shropshire for 27 years and worked at Shropshire Council for over 20 years starting as a frontline social worker and latterly in senior leadership roles including responsibility for child social care

Financial situation

Now in its second year the Liberal Democrat administration at Shropshire Council, led by Councillor Heather Kidd, will be looking at ways to run services better in order to save costs: the overspend is approximately £100 million this year which will be difficult to achieve with the high cost of adult and child social care in Shropshire.

Highways

Highways concerns still take up much of my time. Please report potholes, faulty street lights, fly tipping or other highways issues on **Fix My Street** (www.fixmystreet.com). That way the number and complexity can be monitored but if you don't see them repaired within three months please contact me with the reference number so that I can flag to highways officers.

Buses

I have pushed for information about the route of the Connect on Demand Bus service being extended further into Severn Valley wards but cuts by the government to bus funding of £200k means it will not be happening for the foreseeable future.

Out and about

I manage to attend most Parish Council meetings and I try to come to any community events that I can. Soon it will be summer fete time and I hope to see many of you at these and garden openings over the summer. In my role on the Shropshire Telford & Wrekin Fire Authority I recently had the opportunity to observe a **Drill Night** at Much Wenlock Fire Station. The Fire Service is a great career for women and men and Shropshire Fire & Rescue Service is currently recruiting for new fire fighters so do share that message.

Follow me on Facebook to see what else I'm doing as your Councillor and email me with any concerns that you have and I will try my best to help you.

Cllr Susan Coleman

Working hard for communities in the Severn Valley division of Shropshire Council

Email:
susan.coleman@shropshire.gov.uk

Phone:
07843 111539

Facebook:
www.facebook.com/CllrSusanColeman



The Chapel Community Centre, Cross Houses Room Hire Rates 2026

Day / Session	Rate
Mon to Fri	
Morning	£40
Afternoon	£40
Evening	£40
Sat & Sun	
Day	£50
Evening	£65

Standard sessions consist of 4 hours.

Bookings can be made for timings outside of the session, subject to consideration for other bookings. We try to be as flexible as possible. Costings may be adjusted accordingly. Please request a firm price when booking.

You will be invoiced at the confirmation of the booking with 14 days to pay after the event. Please ensure the invoice number is quoted. Information regarding access to the building on the day will be sent to you beforehand.

The hirer must be 21 years old or over. Any event must have an adult over the age of 21 present for the whole event.

Please ensure curtains are closed in the main hall for evening rentals, as the hall faces a residential building.

Please do not park in the six parking spaces on the right side as you enter the car park as these belong to residents and visitors of the apartments opposite.

Music must cease at **12:00 midnight**. The evening session must finish by **12:30am**.

Please read the terms and conditions for the end of session.

Enquire online through
<https://hallbookingonline.com/chapel>

Email: chapelcommunitycentre@gmail.com



EST  1936

Frank Painter & Sons

FUNERAL DIRECTORS
Spring Gardens, Shrewsbury
01743 362024

— Incorporating —

Grindalls of Wem

FUNERAL DIRECTORS
Aston Street, Wem
01939 233903

4th Generation family owned
bereavement service, covering all areas
Day or Night

www.frankpainterandsons.co.uk

Golden Charter 
Funeral Plans Available

YOUR COMMUNITY CENTRE

Berrington Parish Council is looking for volunteers to help with the running of the Chapel Community Centre. The more who get involved, the lighter the load will be. It's a great way to get involved in your local community and help keep an important community asset up and running.

Whether you can help with providing access / locking the building up, checking the tidiness between bookings or fixing a leaking tap, any and all support is appreciated.

Tasks may include:

- Providing access to the building;
- Helping manage bookings;
- Tidying / maintenance;
- Inspecting communal areas;
- General housekeeping.

Please contact the parish council at berringtonpc@gmail.com for further information.

We're the Which? Insurance Brand of the Year for the second year running

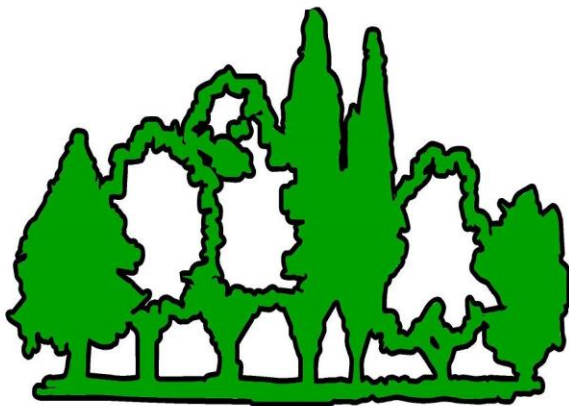


Whether it's for your car, home, farm or business, for quality insurance you can rely on, join us today.

Contact NFU Mutual Shrewsbury
on **01743 344 743**



S L Latter & M D Shepherd is an appointed representative of The National Farmers Union Mutual Insurance Society Limited (No. 111982). Registered in England. Registered Office: Tiddington Road, Stratford-upon-Avon, Warwickshire, CV37 7BJ.



TREE MAN TREE SPECIALIST

CLIVE HANCOX

07811 459 272

01746 766 038

clivehancox66@yahoo.com

- Crown Reduction / Lift / Thin
- Section Felling (Large Trees)
- Tree Planting
- Hedge Trimming
- All Types Of Fencing
- Landscaping
- Stump Grinding (Any Size)
- NPTC Qualified in all aspects of Tree Work
- Over 25 Years of Experience
- Fully Insured
- Friendly Advice & Free Quotes





People's Emergency Briefing

Community Screening



Wednesday 24th June, 7 – 9pm (doors open at 6.45pm)
At the Chapel Community Centre, Cross Houses SY5 6JG

Join us for a screening of the **People's Emergency Briefing** - an eye-opening film which brings together leading UK experts and TV personalities to look at the latest evidence about climate breakdown and threats to nature, and how this affects:

- Flooding and other extreme weather
- Food security
- Health and our NHS
- Cost of living crisis



Watch the trailer by scanning the QR code opposite,

Or go to: bit.ly/PEB-trailer

The film is being shown in over 1,500 community screenings across the UK and features footage from last November's National Emergency Briefing in Westminster for MPs which brought together leading UK experts in climate science, food security, health, economics, national security and nature. The film is hosted by Chris Packham and supported by a wide range of organisations including the National Trust, Church of England, the Royal Meteorological Society, World Wildlife Fund and many more.

After the 50 minute film, we'll have refreshments and a short discussion about what this means for our community and what we can do locally to turn things around. We know that taking action together - as a community - is the best way to get through this crisis.

Bring a family member, friend or neighbour: everyone is welcome.

NB Due to the content, we recommend the film for ages 16+ only

It's a FREE event, although it's helpful if you can book in advance (so that we can make sure we have enough refreshments), but it's also ok to turn up on the day.

For more info and to book, scan the QR code opposite:

Or go to: <https://bit.ly/CrossHousesPEB>



MUCH WENLOCK & CRESSAGE MEDICAL PRACTICE

Patients who DID NOT attend their appointment

The total number of patients who did not attend their appointment in April is **104**. Every missed appointment could have been offered to another patient in need.

High 'Did Not Attend' (DNA) rates increase pressure on services and make it harder for patient to get seen quickly. Each DNA means fewer available appointments.

If you can't attend your appointment, please cancel as soon as possible by calling the surgery on 01952 726011 and selecting option 1.

Appointments

Urgent (non-life threatening) Appointments

- Contact us by Phone Monday to Friday 8.00am to 6.30pm on 01952 726011 (please note that calls between 8.00am to 8.30am and 6.00pm to 6.30pm are triaged by the Out of Hours Provider)
- Visit the surgery and speak with a receptionist. Much Wenlock site is open Monday to Friday 8.00am to 6.30pm; Cressage site is open from 8.30am to 1.00pm and re-opens 2.00pm to 6.00 pm.

Routine Appointments (new and existing problems)

To request a routine appointment

- [Use our Contact Us Online form](#) between 8.00am and 6.30pm Monday to Friday. Your request will be reviewed by a member of the team, and you will be contacted with details on the next steps.
- Contact us by Phone Monday to Friday 8.00am to 6.30pm on 01952 726011 (please note that calls between 8.00am to 8.30am and 6.00pm to 6.30pm are triaged by the Out of Hours Provider)
- Visit the surgery and speak with a receptionist. Much Wenlock site is open Monday to Friday 8.00am to 6.30pm; Cressage site is open from 8.30am to 1.00pm and re-opens 2.00pm to 6.00pm.



SHREWSBURY

FOOD FESTIVAL



West Midlands
Tourism
Award Winners
'Festival of the Year'
2024, 2025, 2026

27 & 28 JUNE 2026

THE QUARRY PARK
SHREWSBURY

FOOD

FAMILY

FUN

180+ food, drink & homeware exhibitors, 2 chef demo stages, tastings, live music, family entertainment stage, field to fork area and lots of free kids activities.

Evening
Concert
6.00-8.30pm
on Saturday

BROUGHT TO YOU BY



SHREWSBURY
FOOD
FESTIVAL

BUY TICKETS



shrewsburyfoodfestival.co.uk



- **NEW TYRES SUPPLIED AND FITTED RIGHT AT YOUR DOOR!**
- **NO EXTRA COST – A TOTAL CONVENIENCE SERVICE**
- **ALL MAKES AND SIZES INC RUN FLAT**
- **PUNCTURES REPAIRED, BALANCING & TRACKING**
- **CHOOSE THE DATE & TIME THAT SUITS YOU!**
- **ORDER ONLINE OR PAY VIA MOBILE CHIP & PIN**

Hometyre

MOBILE TYRE SERVICES

"Buy online & we come to you"
www.hometyre.co.uk



TEL: (01743) 861183 FREE: 0800 7839310 EMAIL: INFO@HOMETYRE.CO.UK

HOMETYRE.CO.UK

A J Findlay Property Services

25 years building and landscaping experience. Fully insured.

All aspects of interior and exterior carpentry, joinery and brickwork.



I have covered a very wide variety of projects in the past so please feel free to contact me. Any work considered.

To view examples of my recent work and reviews please check my Facebook and Instagram pages.

Contact Alex to arrange a free estimate.



07485 404410



ajfindlaypropertyservices@gmail.com



facebook.com/ajfindlaypropertyservices



[@ajf_carpentry_and_joinery](https://www.instagram.com/ajf_carpentry_and_joinery)

EMMA J
HAIRSTYLIST
(25 years experience)

I am fully qualified in a wide range of hairdressing services for ladies, gents & children

I have a home salon in Sutton Farm SY2 or can offer an in home mobile service

07791606145
free consultations

Credit/Debit card facility
Fully insured

EmmaJhairstyling
 EmmaJhairstyling



THE VILLAGE PUMP – THROUGH TIME

Did you know? The Village Pump magazine was first published in February 1996, when it was simply known as 'Newsletter'. The inaugural edition featured practical information alongside local news, business updates and other community matters, for example a fundraising appeal for repairs to Berrington Church. It also highlighted developments at Cross Houses Hospital, a historically significant site that had evolved from a First World War military hospital in 1917 to a maternity hospital in the 1960s and, by 1996, the headquarters of Shropshire's Community Health Service.

The eventual name of the magazine emerged from a community competition, with two local residents (Mrs Meachin of Berrington and Mrs Harries of The Mount, Cross Houses) jointly credited for coining The Village Pump in 1996.

Early editions had an emphasis on community engagement and local identity. A children's section invited young residents to contribute drawings for village-wide distribution, while contributions from residents addressed immediate neighbourhood concerns, such as a 1996 appeal to establish a neighbourhood watch following a car theft in High Cross Avenue and ongoing concerns about the local landfill at Betton Abbots.

The publication also served as a platform for sharing local demographic insights, noting that the parish comprised 371 households and a population of around 750 at the time, with a significant proportion of older residents and a notable percentage (25%) of households without cars. Today, as of the 2021 census, there are 1,199 residents in the parish!

By 1997, a series of features focussing on local history were established. Snippets include:

- The Post Office was once opposite the junction to Lower Cross, at The Hollies;
- Yates Butchers used to be located opposite the former Fox Inn, which is itself now a house;
- The shop at the petrol station used to be known as 'County Stores' and was built by the local Berrington builders, Purslows, and opened as a shop in 1889. There was the shop, a bake house and living quarters for the owner and rooms for the apprentices who worked 16-hour days and lived in for 6.5 days per week. The Stores was one of the first service stations in the UK selling petrol – and later became one of the first in the UK to sell fuel by the litre.



- Attempts to create a cycle path along the old railway line were discussed by Huw Roberts as long ago as Feb 1999 – unfortunately, almost three decades later, there has still been no progress.
- The first editor of the pump was Hazel Tarragon (Feb 1996 – Dec 1996), followed by Frances Barlow (Feb 1997 – Jan 1999), Trevor Mytton (Feb 1999 – at least 2006). More recently, the magazine was edited by Lezley Picton until May 2025. We don't have copies of the Pump from 2007 – 2019 so please get in touch if you can help fill the gaps!

Going forward, we would like to include more articles on local history, long-serving residents and community projects. Please email thevillagepump@outlook.com with your ideas, stories, photographs, events or anecdotes.





All Things Travel - Where your journey begins



Dreaming of your next getaway? All Things Travel is here to make it happen!

Whether you're looking for a relaxing escape, a family adventure, or a tailor-made itinerary, we can book any package or bespoke holiday with any budget in mind

**Call or email now and lets start
planning your next holiday!**

Phone: 07854 560071

Email: kelly@allthingstravel.net

Follow us on facebook and instagram
to catch our latest travel offers!



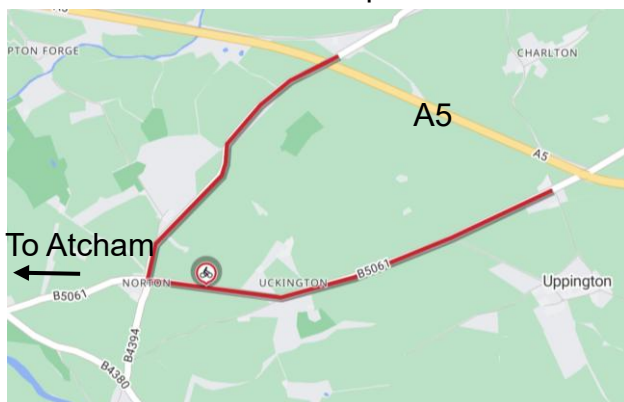
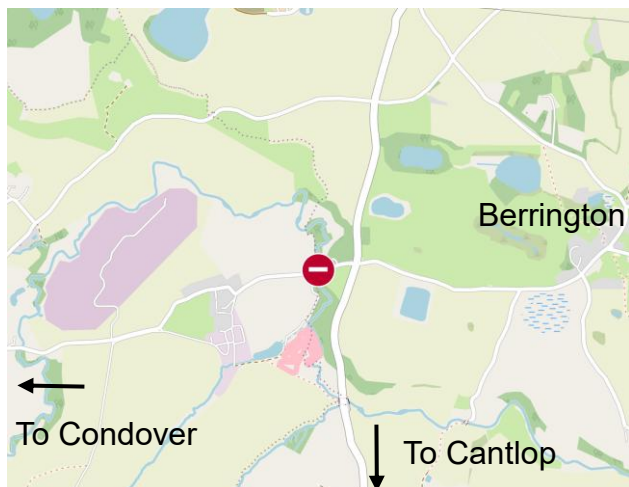
UPCOMING ROADWORKS / POINTS TO NOTE

When? 27th July to 21st August 2026
Where? Boreton Bridge
Why? Bridge Repairs
Reference: UJ215BR-1509043

Road Closure to enable bridge repairs

When? Thursday 9th July 2026
 (18:30 to 21:30)
Where? B5061 Atcham to Uppington
Why? Cycling event

British Cycling event (Admaston) B4394, B5061. Roads open to normal traffic, possible minor delays at times. Marshals throughout route to provide assistance and warnings as required. Some short duration traffic control in place.





Leaton Forest Firewood

Locally Grown, Traditionally Seasoned Firewood

Barrow Bags
 Premium grade, £50
 B grade, £45

Bulk Bags
 Premium grade, £150.00
 B grade, £125.00

Kindling £8.00

Free Local Delivery

To order;
 Email; trees@leatonforest.co.uk
 or
 order through our website;
www.leatonforest.co.uk/firewood-log-sales/






USEFUL TELEPHONE NUMBERS

Atcham Parish Council Clerk	01691 622093	NHS Direct	111
Cressage Surgery	01952 511166	Samaritans	01743 369696
Marden Surgery	01743 241313	Shropshire Council	0345 678 9000
Riverside Surgery	01743 367891	Severn Trent Water	0800 783 4444
Shrewsbury Police Station	0300 333 3000	Shropshire Home Point	0300 303 8595
Bromford Housing Association	0330 1234 034	Shrewsbury Dial-a-Ride	01743 450350
Homes Plus	0800 048 8955	Shropshire Highways	0345 678 9006
Councillor Susan Coleman	07843 111539	Bins & Recycling (missed collections)	0345 678 9007
Citizens Advice Bureau	0808 278 7894	Royal Shrewsbury Hospital	01743 261000
Age UK	01743 233123	Princess Royal Hospital, Telford	01952 641222
Domestic Abuse Helpline	0808 2000 247	National Grid (Emergency)	0800 6783 105
Cruse Bereavement Care	0808 808 1677	National Grid	0800 096 3080
Berrington Parish Council Clerk	07379 213308	RSPCA (Cruelty Hotline)	0300 1234 999
Gas Emergency Services	0800 111 999	Floodline	0345 988 1188
National Rail Enquiries	03457 484950	Dog Fouling (Reporting) – Longden Road Depot	0345 678 9006
Crimestoppers	0800 555 111		



Peat-Free Compost

Topsoil

Bark Mulch

Woodchip

Locally produced in Shropshire. Loose and bagged - delivery and collection available

www.carbonearth.co.uk

Call **01743 821226/ 07935293225** or email products@carbonearth.co.uk